

THANK YOU!

We have obtained the ISO9001 quality management certificate and we often got repeated orders from our customers, so you could believe our quality and reputation.

We have a professional factory dedicated to providing high-quality products, discounted prices, and short delivery times to new and old customers. We hope to become the best partner.

CONTACT US!



Tel/WhatsApp:

+86 166-5153-5332



E-mail

Millie@flgroup.cn



Website

[Https://www.flgroup.cn](https://www.flgroup.cn)



FULILAI STEEL PRODUCT CATALOG

With trust and cooperation, both sides win-win as the goal.

We have a professional team of companies for your full service, with high quality steel and metal and low prices to win your trust, looking forward to your initiative to contact communication.

JIANGSU FULILAI STEEL COMPANY BROCHURE

We are your reliable partner.

ABOUT US

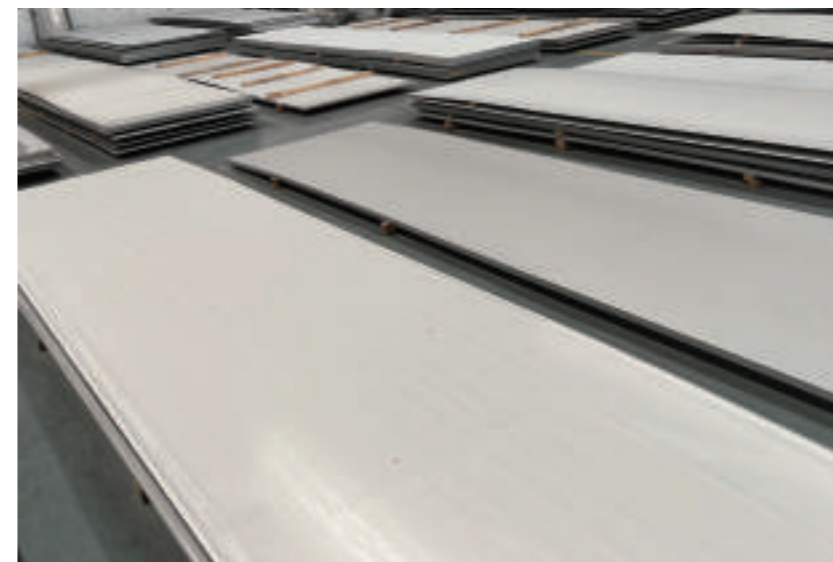
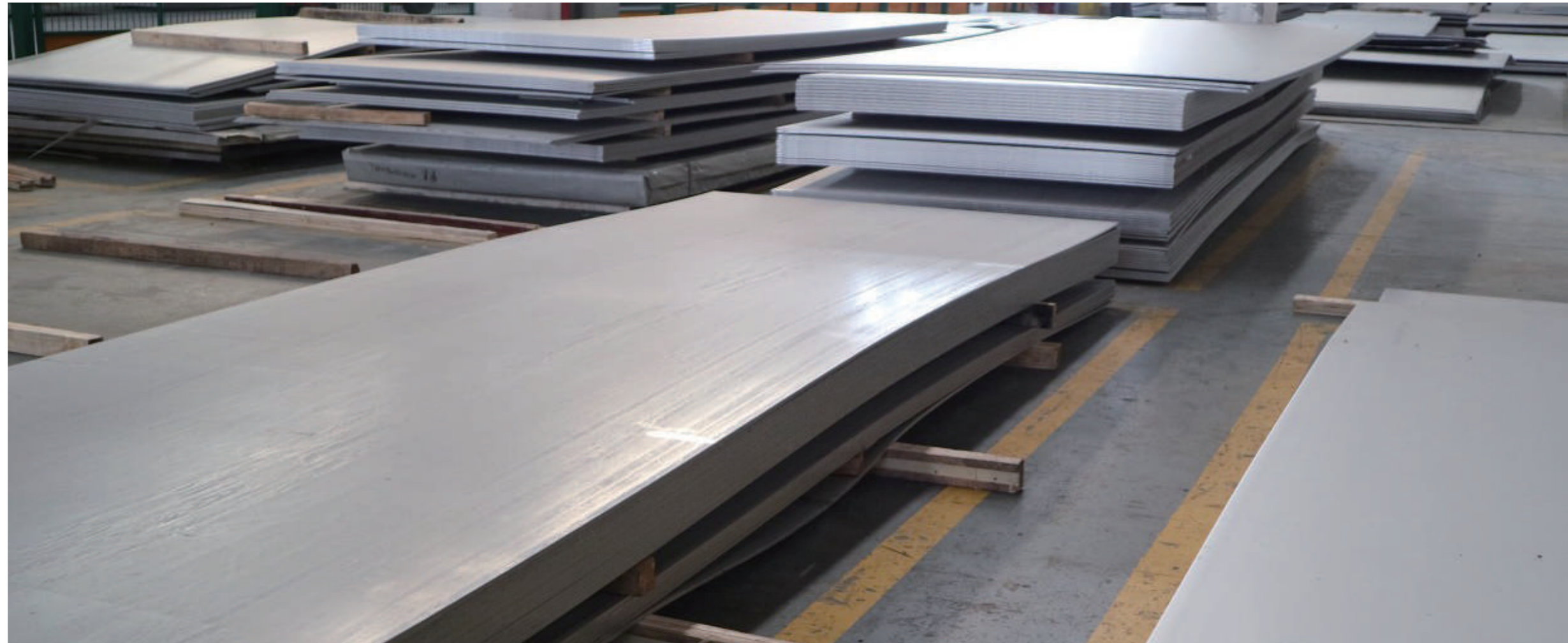
Jiangsu Fulilai Steel Co.,Ltd.is a professional and reputable steel manufacturer and exporter from Wuxi, China. We have been in this line for more than 15 years. We have steel factories both in Liaocheng and Wuxi which are well-known as the two biggest steel production and distribution centers in China. We can provide stainless steel sheets,coils,tubes,bars,profiles as well as Nickel Alloy and Hastelloy Alloy,and also so provide galvanized steel ,carbon steel.

Our steel service capabilities include slitting, shearing, blanking, leveling, degreasing and brushing and metallurgical support. Our products are mainly exported to Europe, America, Southeast Asia, the Middle East and other countries and regions and widely used in construction, bridge, car manufacturing, electrical installation and mining fields. We have won great recognition and reputation for our good credibility and services during the past 15 years.In the future, we will move on to provide more and better steel products for our client on the belief of High Quality, Big Honesty and Strong Reliability.



Stainless Steel Sheet

201/202/304/304L/316/316
L/309S/310S/321/409/410
S/430/444/904L/2205



Product	Stainless steel sheet/plate
Type	Hot rolled/ Cold rolled
Thickness	Cold rolled:0.3-6mm,hot rolled:3-150mm
Width	1000mm,1220mm,1500mm,2000mm or customized
Length	2000mm,4000mm,6000mm or customized
Surface	2B,No.1,Hairline,Brush,No.4,BA,6K,8K,Mirror,Embossed etc
Standard	AISI,ASTM,DIN,JIS,GB,JIS,SUS,EN,etc

Stainless Steel Coil

Product	Stainless steel coil
Thickness	Cold rolled:0.3-6mm,hot rolled:3-14mm
Width	1000mm,1220mm,1500mm,2000mm or customized
Surface	2B,No.1,Hairline,Brush,No.4,BA,6K,8K,Mirror,Embossed etc
Type	Hot rolled/ Cold rolled
Standard	AISI,ASTM,DIN,JIS,GB,JIS,SUS,EN,etc
Application	Roofing pile/home appliance shell/chimney/kitchenware/ anti-corrosion resistant parts of cars/refrigerating equipment for food/ storage, transportation and packaging of products coils, foils, rolls, plain coil, shim coil, perforated coil, chequered coil, strip, flats,blank (circle), ring (flange) etc.

Surface Treatment

Surface	Characteristic	Summary of Manufacturing Method
NO.1	Silvery white	Hot rolled to specified thickness
NO.2D	Silvery white	After cold rolling, heat treatment and pickling are carried out
NO.2B	Gloss is stronger than No.2D	After No.2D treatment, the final light cold rolling is carried out through the polishing roller
BA	As bright as a sixpence	No standard, but usually a bright annealed surface with high reflectivity.
NO.4	Intermediate grinding	Polished surface obtained by grinding with 150~180# strop abrasive tape
HL	Hairline grinding	Suitable particle material for hair stripe grinding (150~240#) with many grains
NO.8	Mirror ultrafinish	The mirror is ground with a polishing wheel



Stainless Steel Coil

201/202/304/304L/316/316
L/309S/310S/321/409/410
S/430/444/904L/2205

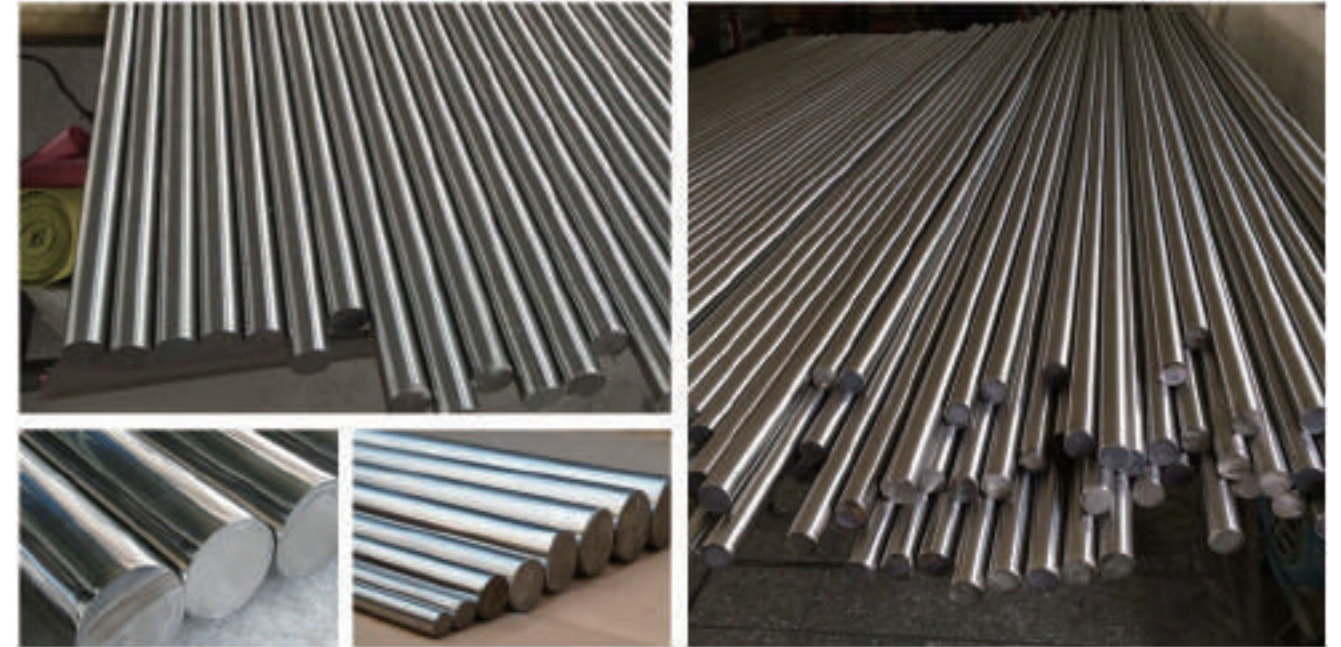


Stainless Steel Bar

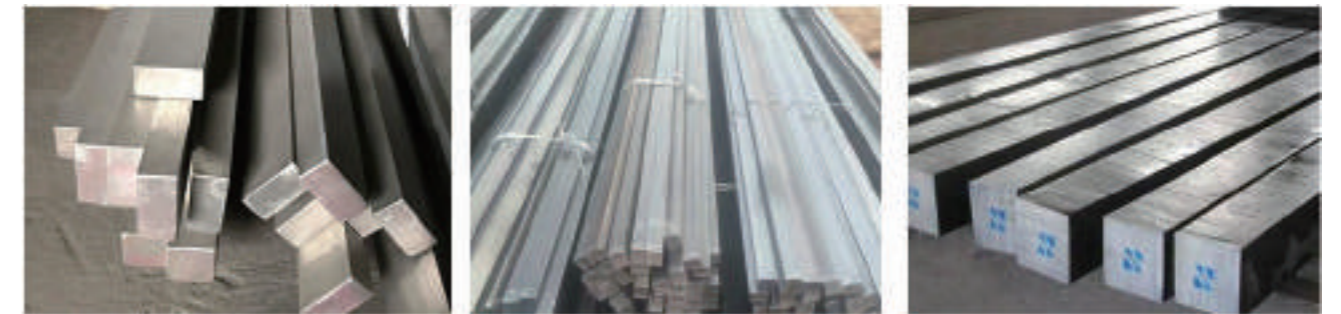
2507, 2205, 321, 304, 305,
301, 202, 201, 15-5PH, 444,
904L, 440, 131, 430, ETC



Round Bar



Square Bar



Hexagonal Bar



Product	Stainless steel bar
Diameter	3-800mm
Length	2m, 5.8m, 6m, or as required
Finish	Annealed / Polished
Standard	AISI,ASTM,DIN,JIS,GB,JIS,SUS,EN,etc
Package	Standard export package
Application	Kitchenware, home appliances, construction decoration, stairs, refrigerated container,burner parts, exhaust parts of auto

Stainless Steel Pipe

Product	Stainless steel pipe	
Grade	201、202、301、302、304、304L、309S、310S、316、316L、321、410、430、430A、440A、440B、440C、904L、2205、2507、2520 ect. Or Customized	
Standard	GB, AISI, ASTM, ASME, EN, BS, DIN, JIS	
Surface	Satin Finish(180#.240#.320#),Bright Finish(400#,600#,mirror),-Mill Finish(2B),Hairline-Finish(HL/Brushed),Ti-gold, Glossy matt,dull and so on.	
Specifications	Outer diameter	6mm-630mm or customized
	Wall thickness	0.1-30mm or customized
	Length	0.3-15.8m or customized
Technique	Cold rolled	welding or customized
	Hot rolled	seamless
Test and Inspection	Squash test, extended test, water pressure test, crystal rot test, heat treatment, NDT	
Thickness tolerance	±0.05mm	

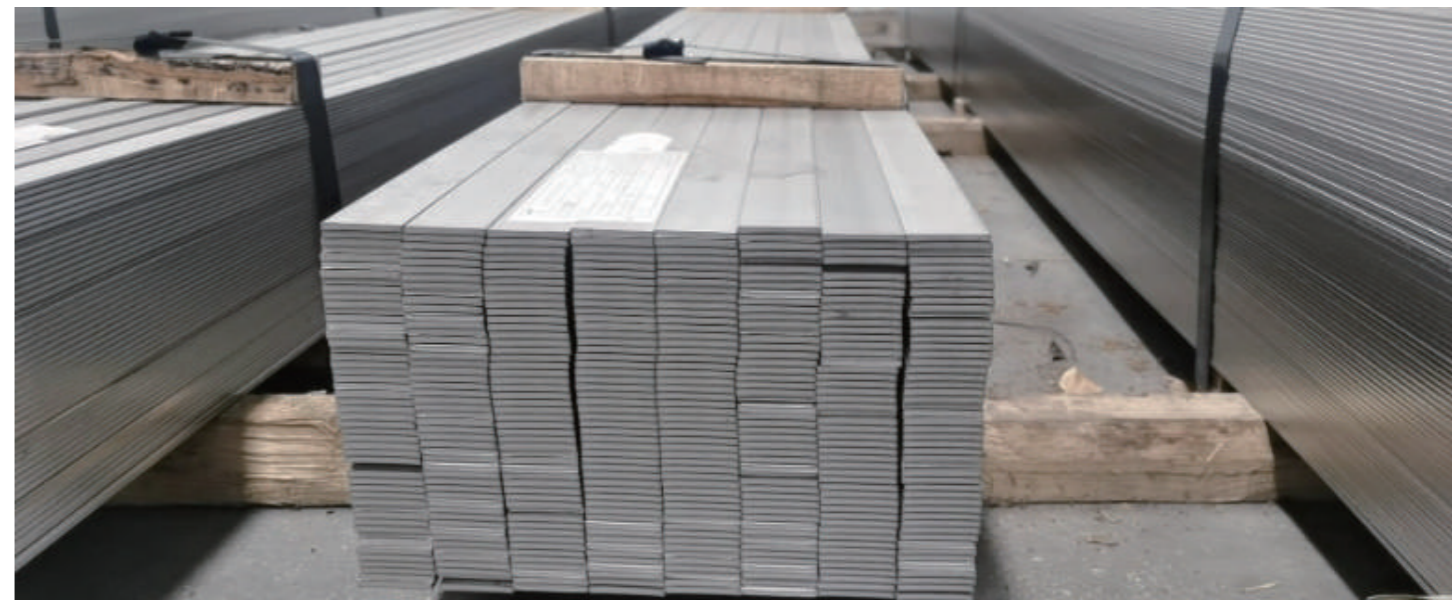
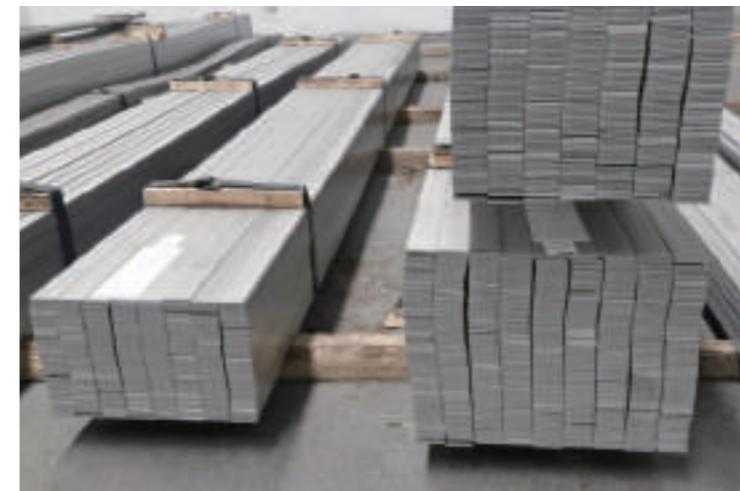


Stainless Steel Pipe

201/202/304/304L/316/316
L/309S/310S/321/409/410
S/430/444/904L/2205

Stainless Steel Flat Bar

Product	Stainless Steel Flat Bar	
Grade	201,202,301 304 304L ,310,310S,316 316L 309 310 430 ect.	
Type	FLAT, FLAT STRIP	
Technique	Cold Rolled & Hot Rolled & Cold Drawn, Polish	
Dimensions	Thickness	0.14-400mm
	Width	10-900mm
	Length	3/4/5.8/6m
	Or as per customer' s request	
Standard	ASTM AISI EN DIN GB	
Packing	Standard export packaging or as per customer' s request	



Stainless Steel Flat Bar

201,202,301 304
304L ,310,310S,316 316L
309 310 430 ECT.

Stainless Steel Square Tube

Product	Stainless steel square tube
Finish	Polished / Pickled / Hairline / Mirror
Type	Square pipe / Rectangle pipe
Thickness	0.3mm-150mm
Dimensions	Customized Size
Standard	JIS, AISI, ASTM, GB, DIN, EN ,etc.
Grade	201,202,304,304L,347,309S,310S,316,316L,410,420,430,904L, Duplex stainless



Stainless Steel Square Tube

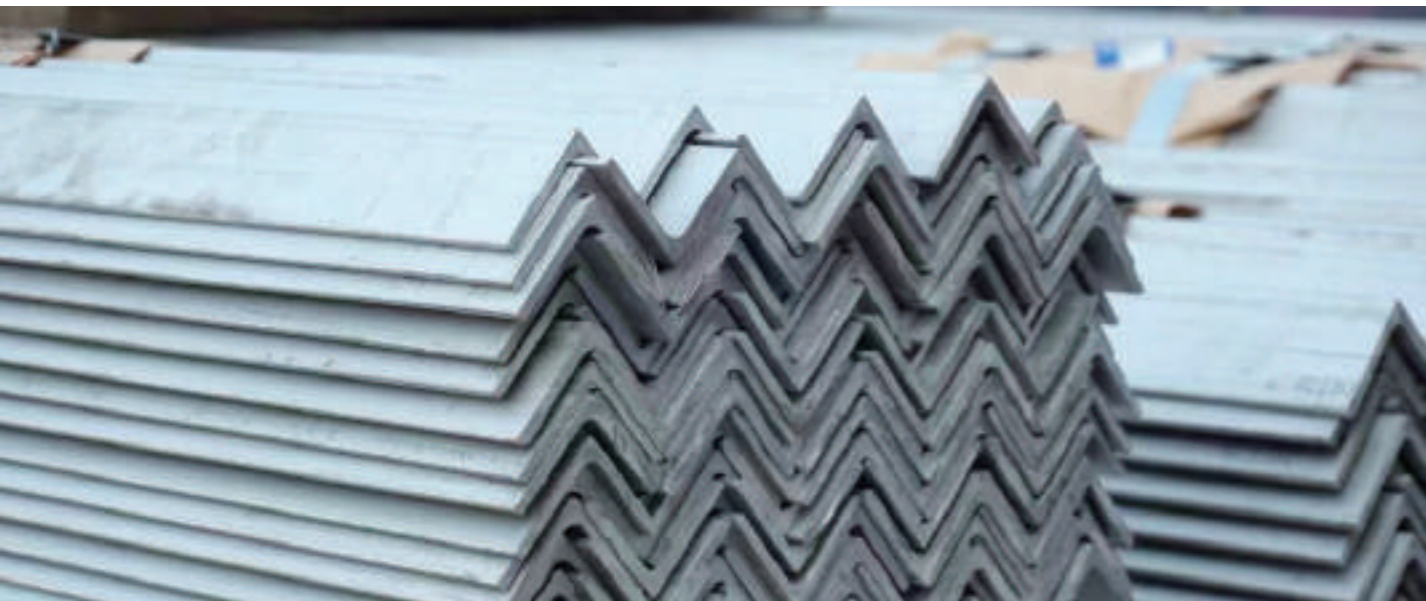
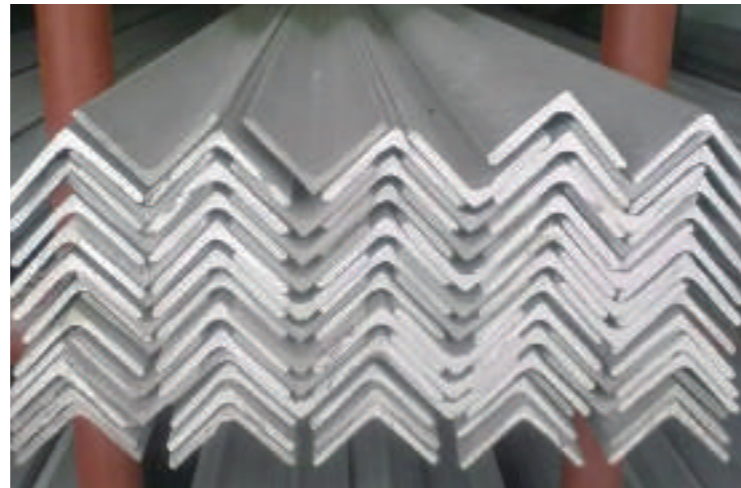
201,202,304,304L,347,
309S,310S,316,316L,
410,420,430,904L





Stainless Steel Angle Bar

201, 304, 304L, 321, 316,
316L, 301S



Product	Stainless steel angle bar
Length	6m or as customer's requirement
Standard	JIS, AISI, ASTM, GB, DIN, EN ,etc
MOQ	2 Ton
Application	Decoration, industry, etc.
Certificate	SGS
Packaging	Standard exporting packing
Trade terms	FOB,CFR,CIF,CNF
Delivery time	Within 15 working days after receiving your deposit



Stainless Steel Angle Bar

25*3	70*8	100*16	180*16	63*40*5
25*4	75*5	110*7	180*18	63*40*6
30*3	75*6	110*8	200*14	63*40*7
30*4	75*7	110*10	200*16	70*45*5
40*3	75*8	110*12	200*18	70*45*6
40*4	75*10	110*14	200*20	70*45*7
40*5	80*6	125*8	200*24	70*50*5
50*3	80*8	125*10	25*16*3	75*50*6
50*4	80*10	125*12	32*20*4	75*50*8
50*5	90*6	125*14	40*25*3	75*50*10
50*6	90*8	140*10	40*25*4	80*50*5
60*5	90*10	140*14	45*28*3	80*50*6
60*6	90*12	140*16	45*28*4	80*50*7
63*4	100*6	160*10	50*32*3	80*50*8
63*5	100*7	160*12	50*32*4	90*56*5
63*6	100*8	160*14	56*36*3	90*56*6
63*8	100*10	160*16	56*36*4	90*56*7
70*6	100*12	180*12	56*36*5	90*56*8
70*7	100*14	180*14	63*40*4	100*63*6



Stainless Steel Channels

201, 304, 304L, 321, 316,
316L, 301S



Stainless Steel Channels

Product	Stainless Steel Channels
Length	6m or as customer's requirement
Standard	JIS, AISI, ASTM, GB, DIN, EN ,etc.
MOQ	2 Ton
Application	Decoration, Industry, Etc.
Certificate	SGS
Packaging	Standard exporting packing
Trade Terms	FOB,CFR,CIF,CNF
Delivery Time	Within 15 working days after receiving your deposit



Dimension Of Stainless Steel Channel

Type	Specification(mm)	Theoretical Weight(kg)
5#	50*37*4.5	5.438
6.3#	63*40*4.8	6.634
8#	80*43*5.0	8.046
10#	100*48*5.3	10.007
12#	120*53*5.5	12.059
14#A	140*58*6.0	14.535
14#B	140*60*8.0	16.733
16#A	160*63*6.5	17.24
16#B	160*65*8.5	19.752
18#A	180*68*7.0	20.174
18#B	180*70*9.0	23
20#A	200*73*7.0	22.637
20#B	200*75*9.0	25.777
22#A	220*77*7.0	24.999
22#B	220*79*9.0	28.453
25#A	250*78*7.0	27.41
25#B	250*80*9.0	31.335

Dimension Of Stainless Steel Channel

Type	Specification(mm)	Theoretical Weight(kg)
25#C	250*82*11	35.26
28#A	280*82*7.5	31.427
28#B	280*84*9.5	35.823
28#C	280*86*11.5	40.219
30#A	300*85*7.5	34.463
30#B	300*87*9.5	39.173
30#C	300*89*11.5	43.883
32#A	320*88*8.0	38.083
32#B	320*90*10	43.107
32#C	320*92*12	48.131
36#A	360*96*9.0	47.814
36#B	360*98*11	53.466
36#C	360*100*13	59.118
40#A	400*100*10.5	58.928
40#B	400*102*12.5	65.208
40#C	400*104*14.5	71.488



Stainless Steel Beam

201、304、304L、321、316、
316L、301S



Stainless Steel Beam

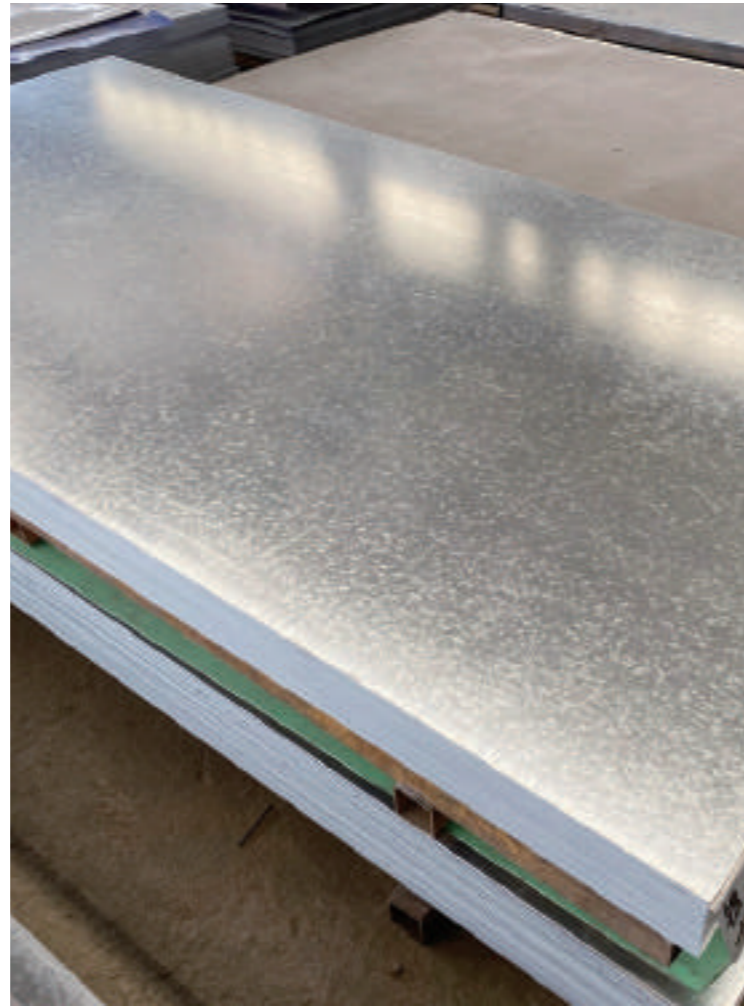
Product	Stainless Steel Beam
Size	100*50-700*300mm
Web Thickness	5-16mm
Web Width	50-300mm
Flange Thickness	4.5-23mm
Flange Width	50-400mm
Standard	ASTM, ANSI, GB, DIN, JIS, EN, ISO.
Surface Treatment	Hot Dip Galvanized, Painting or Black.
Length	1-12m or as customer request
Technique	Hot rolled/Cold Rolled/Galvanized
Custom services	Cutting-Punching-Drilling
Packing	By bundles with steel strips or as customer request
Delivery Time	15 working days after receiving advance payment or L/C
Application	Mechanical&manufacture, Steel structure, Shipbuilding, Bridging; Automobile chassis.





Galvanized Steel Sheet(GI)

ASTM-A653; ASTM A153; JIS G3302; EN10147;DS ;ETC



Product	Galvanized Steel Sheet / Plate
Material	SGCC/CGCC/TDC51DZM/TDC52DTS350GD/TS550GD/DX51D+Z(ZF)
Standard	ASTM-A653; ASTM a153; JIS G3302; EN10147;DS ;etc
Thickness	0.10 ~3.0 mm
Width	600-1500mm
Zinc Coating	Z20-600g/m ²
Length	2440mm 3000mm or Customized
Regular Order	27 tons or one container, for less quantity to contact with us for details
Hardness	Soft hard(HRB60),medium hard(HRB60-85),full hard(HRB85-95)
Surface Structure	Regular spangle,Minimum spangle, Zero spangle, Big spangle
Surface Treatment	Bright , Chromated/Non-Chromated, Oiled/Non-oiled, Skin pass



Galvanized Steel Coil

ASTM-A653; ASTM A153; JIS G3302; EN10147;DS ;ETC

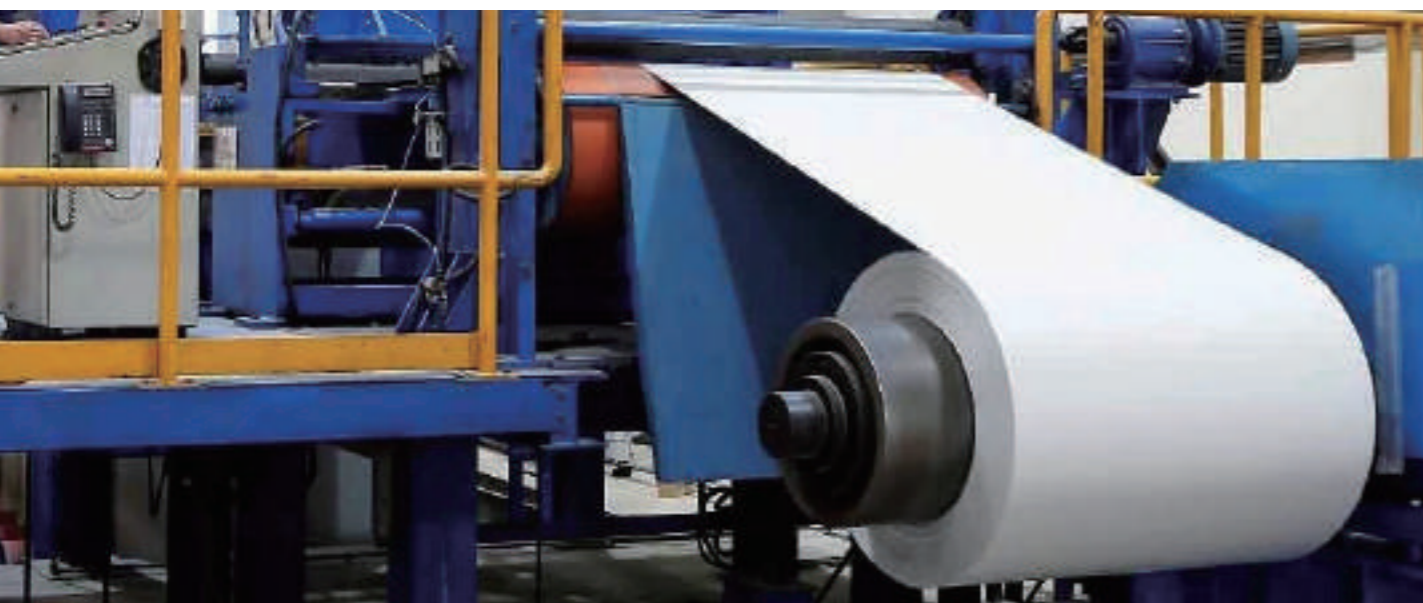
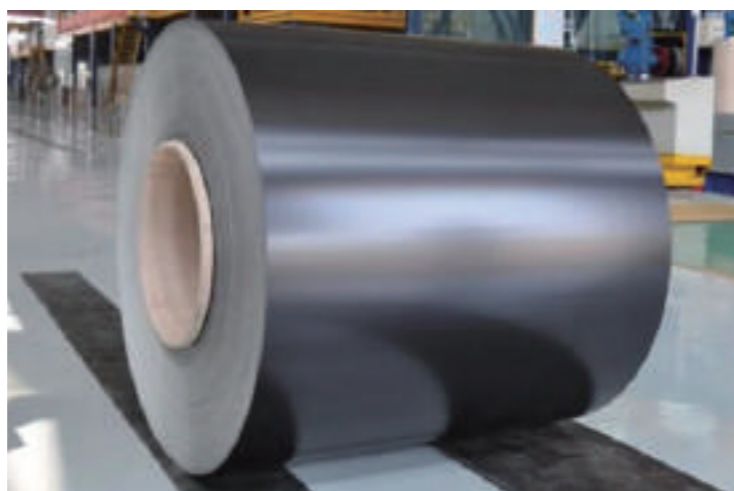
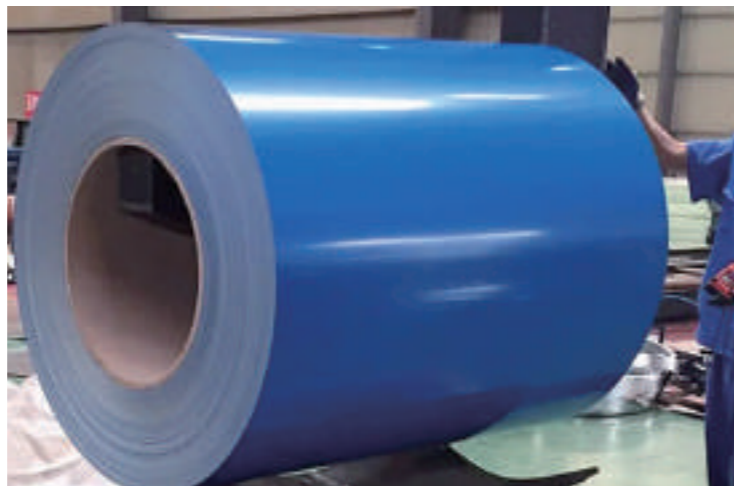


Product	Galvanized Steel Coil
Material	SGCC/CGCC/TDC51DZM/TDC52DTS350GD/TS550GD/DX51D+Z(ZF)
Standard	ASTM-A653; ASTM a153; JIS G3302; EN10147;DS ;etc
Thickness	0.10 ~3.0 mm
Width	600-1500mm
Zinc Coating	Z20-600g/m ²
Coils weight	3~5 tons or Customized
Regular Order	27 tons or one container, for less quantity to contact with us for details
Hardness	Soft hard(HRB60),medium hard(HRB60-85),full hard(HRB85-95)
Surface Structure	Regular spangle,Minimum spangle, Zero spangle, Big spangle
Surface Treatment	Bright , Chromated/Non-Chromated, Oiled/Non-oiled, Skin pass





Color-coated steel coil / Pre-painted steel coil/PPGI/PPGL



Product	Color coated galvanized steel coil / PPGI Coil
Standard	GB,AISI,ASTM,DIN,JIS,JIS 3302 / ASTM A653 / EN10143
Types	PPGI / PPGL / GI / GL coil/plain sheet/ corrugated roofing sheet
Grade	SGCC/CGCC/TDC51DZM/TDC52DTS350GD/TS550GD/ DX51D+Z Soft / Full hard / TDC51D+Z / TDC52D+Z/ SPCC/ SPGC
ID Coil	508 or 610mm
Technology	Hot dipped galvanized
Zinc Coating	20-300g/m ²
Thickness	0.10-3.0mm
Color	Color Coated PPGI Coil--we have wooden pattern, flower pattern,Marble pattern, Brick pattern, Camouflage pattern and RAL Color PPGI Coils or Customized
Quality	We can offer the certificationof chemical and merchanical property.
Lead Time	10-15 days after receiving the deposit
Sample	We could offer the sample for free charge but do not pay the Cost of freight.
Type Of Painting	EXPOXY,RMP (REGULAR MODIFIED POLYESTER), SMP (SILICON MODIFIED POLYESTER),HDP (HIGH DURABLE POLYESTER), PVDF (Poly Vinylidene Fluoride),PLASTISOL,PUPA/ARS,Anti-bacterial, Wrinkle Finish Anti SKIDDING, Self-Cleaning/ Anti Dust.
Surface Finish	Smooth, Matt, Gloss, Textured
Paint Coating	4-8 Microns primer + 15 TO 35 microns top Coat



Aluminum coil/ sheet/strips/ plate

1000 SERIES、2000 SERIES
3000 SERIES、5000 SERIES
6000 SERIES ETC



Product	Aluminum coil/sheet/strips/plate
1000 Series	Industrial Pure Aluminum(1050,1060 ,1070, 1100)
2000 Series	Aluminum-copper alloys(2024(2A12), LY12, LY11, 2A11, 2A14(LD10), 2017, 2A17)
3000 Series	Aluminum-manganese alloys(3A21, 3003, 3103, 3004, 3005, 3105)
4000 Series	Al-Si alloys(4A03, 4A11, 4A13, 4A17, 4004, 4032, 4043, 4043A, 4047, 4047A)
5000 Series	Al-Mg alloys(5052, 5083, 5754, 5005, 5086,5182)
6000 Series	Aluminum Magnesium Silicon Alloys(6063, 6061, 6060, 6351, 6070, 6181, 6082, 6A02)
7000 Series	Aluminum, Zinc, Magnesium and Copper Alloys(7075, 7A04, 7A09, 7A52, 7A05)
Thickness(mm)	Aluminum sheet:0.15-6.0 aluminum plate:6.0-25.0
Width(mm)	20-2000
Standard	GB, JIS, DIN, ASTM
Surface Treatment	Brushed, Mirror, Embossed, Sandblasted, etc
Temper	O/H111 H112 H116/H321 H12/H22/H32 H14/H24/H34/H16/H26/H36 H18/H28/H38 H114/H194, etc.
Type	Coil/sheet/strips/plate
Package	Standard export package,such as wooden box or as required.

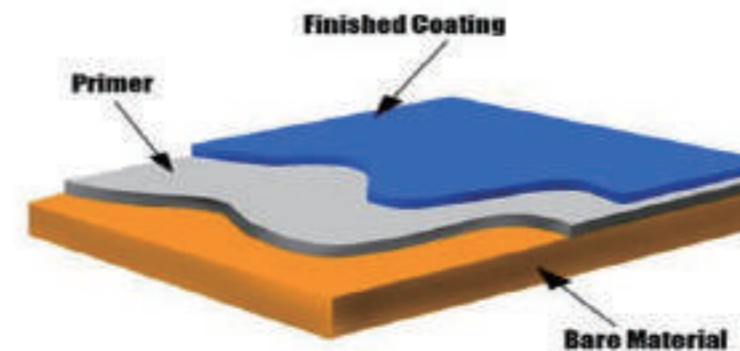


Aluminum coil/sheet/strips/plate

S.N	PROPERTIES	PVDF	HIGH DURABLE POLYESTER	PUPA	SILICON MODIFIED POLYESTER
1	COLOUR RANGE	GOOD RANGE	EXCELLENT RANGE	GOOD RANGE	GOOD RANGE
2	DURABILITY	OUTSTANDING	EXCELLENT	EXCELLENT	EXCELLENT
3	HEAT RESISTANCE	GOOD-EXCELLENT	GOOD	EXCELLENT	GOOD-EXCELLENT
4	ABRASION RESISTANCE	GOOD	GOOD	EXCELLENT	EXCELLENT
5	GLOSS RETENTION	EXCELLENT	EXCELLENT	GOOD	GOOD
6	CUPPING	6 mm	6 mm	6 mm	6 mm
7	PENCIL HARDNESS	F-HB	H	H	H
8	CROSS HATCH9	100% passes	100% passes	100% passes	100% passes
9	SALT SPRAY	2000 hrs	1000 hrs	1000 hrs	1000 hrs
10	WARRANTY	15-20 YEARS	10-15 YEARS	15 YEARS	5 YEARS
11	UV RESISTANCE	EXCELLENT	GOOD	GOOD	GOOD
12	MEK DOUBLE RUB	GOOD	GOOD	GOOD	GOOD
13	IMPACT TEST	GOOD	GOOD	GOOD	GOOD
14	T-BEND	0T/1T	0T/1T	0T/1T	1T/2T
15	FILM	SOFT	SOFT/HARD	HARD	HARD
16	QUV B	EXCELLENT	EXCELLENT	GOOD-EXCELLENT	POOR / GOOD

Process Capability (Line Specification)

Description	PPAL
Type	Continuous COLOR COATING
Line Speed	100 mpm
Thickness (mm)	0.30 TO 2.00 mm
Width(mm)	650 TO 1350 mm
Output Coil ID(mm)	508 mm
Output Coil OD(mm)	1200 mm MAX
Output Coil Weight(mt)	4 MT MAX
Type of Painting	Epoxy,rmp (Regular Modified Polyester), Smp (Silicon Modified Polyester),Hdp (High Durable Polyester), PvdF (Poly Vinylidene Fluoride),Plastisol,pupa/ars,anti-bacterial, Wrinkle Finish Anti Skidding, Self-cleaning/ Anti Dust.
Surface Finish	Smooth, Matt, Gloss, Textured
Type of Material	ALLOY (1100, 1060, 3003,3104, 3004, 3105, 3005, 5052,5005, 5182, 5754 etc.)
Temper	HO, H12, H14, H18, H22, H24, H26, H28, H32, H44, H46 etc.
Paint Coating	4-8 Microns primer + 15 TO 35 microns top Coat(Four Coat System also available – Top & Bottom Side with Primer + Paint)



Different Resins Offer Different Performance Qualities

